



TOHATSU

Feel the Wind™

THE ALL NEW 4 STROKE MFS75/90/100/115



Revolutionary Design - Only By Tohatsu



When it comes to outboard motors, it is the horsepower that people see first. We have asked ourselves many times, "How can we offer the best motor in this 75/90/100/115hp class?".

Horsepower is determined by displacement and maximum RPM, so finding out what makes ours stand out was our first task. But, increasing displacement makes the weight go up, which will never be a favorable option for an outboard. Minimizing displacement, yet at the same time maximizing the performance of acceleration was the biggest challenge. It was realized, "Why not design an exhaust manifold that has never been applied to an outboard motor?". To answer this question, we re-imagined the conventional stereotype exhaust system to create what we call "4-2-1 Performance Tuned Exhaust" giving you best-in-class torque to generate strong acceleration and top end speed.



The All New TOHATSU Mid-Range Delivers Big Fun & Big Fish.



4-2-1 Performance Tuned Exhaust



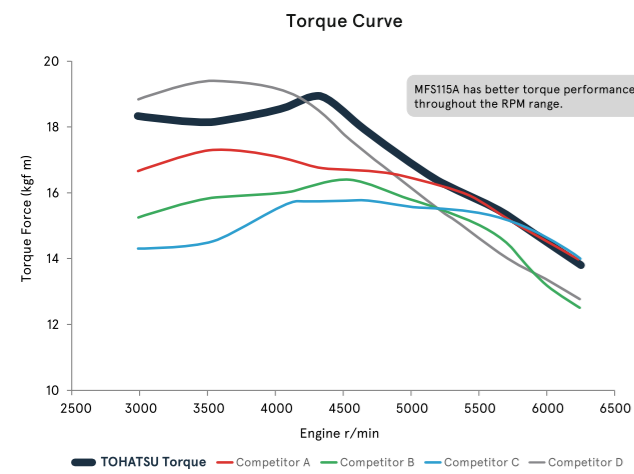
- #1 ▶The length of exhaust passage for each cylinder is equal length to promote best performance throughout the entire RPM range.
- #2 ▶The exhaust gas from cylinders #1 and #4 combine to one and that of cylinders #2 and #3 combine to one.
- #3 ▶Those two passages merge to create the best exhaust flow by creating extra suction to help pull the exhaust from the engine.
- #4 ▶This design eliminates the interference of exhaust gas compared to a regular 4 to 1 exhaust manifold.
- ▶This is the first outboard motor to embrace this industry leading design.



Movie available here

Outstanding Torque | Exhilarating torque performance you can only experience with Tohatsu.

MFS75/90/100/115A has the highest torque which achieve fastest top engine speed and acceleration against any other competitors. Why? Because we designed isometric aggregated exhaust manifold "4-2-1 Performance Tuned Exhaust" to maximize torque and acceleration performance. This unique design is an industry first and can only be found on Tohatsu Outboards. You'll drive boats more powerful and efficient like no others.

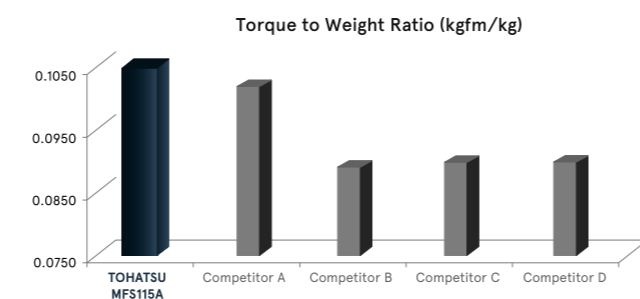


**Data based on research done and collected by Tohatsu Engineering Department

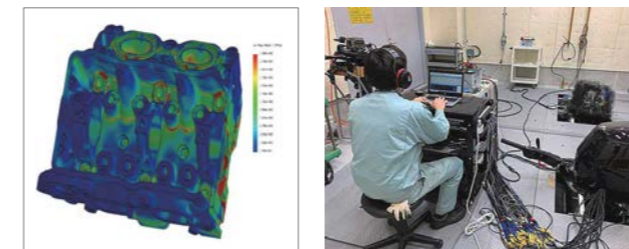
Increased Durability & Optimized Weight | The best torque to weight ratio necessary for a smarter boating experience.

Durability is something you take for granted. Yet, it is one of the most required aspects of an outboard motor. Multiple analysis were conducted on 3D CAD to optimize each part for durability. With nearly 100 engines tested, exceeding 30,000 hours of run time, and countless field tests which were done all across the world in a variety of conditions, we can assure you the highest quality and durable outboard.

One more thing to emphasize is our achievement of best torque to weight ratio. Our extensive analysis conducted on each and every component made it possible to achieve this best in class torque to weight ratio.

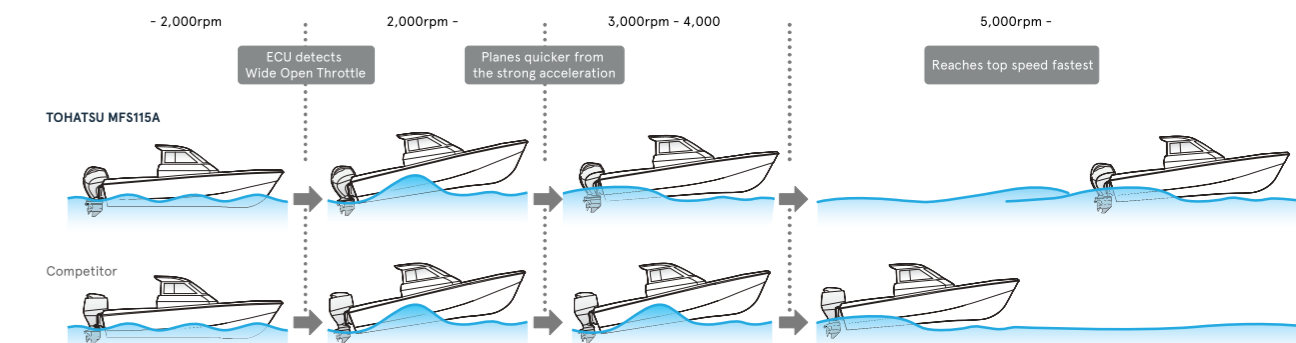


**Data based on research done and collected by Tohatsu Engineering Department



Smooth Operation | A new standard set for a more exciting boating experience by Simpliq™ Technology.

Responsive acceleration, fast top end speed and simple engine operation are the key for a fun and memorable boating experience. With our Simpliq™ Technology - Simple, Quality, Interface - our all new MFS75/90/100/115 has all of the above with the simplest and most minimal way possible.



**Data based on research done and collected by Tohatsu Engineering Department (only on pure 115hp engine-family)

Specification

Specification / Model	MFS75A	MFS90A	MFS100A	MFS115A (W)
Engine Type	4-Stroke 4-Cylinder SOHC-16V			
Maximum Output kW (PS)	55.2 (75)	66.2 (90)	73.6 (100)	84.6 (115)
Operation Range (r/min)	5,000 - 6,000			
No. of Cylinders	4			
Displacement	1995 cc (121.6 cu.in.)			
Bore x Stroke	84 x 90 mm (3.31 x 3.54 in.)			
Dry Weight	L: 178 kg (392.1 lbs) / UL: 182.5 kg (402.0 lbs)			
Shaft Length	L: 517 mm (20.35 in.) / UL: 644 mm (25.35 in.)			
Gear Ratio	2.08 (25:12)			
Alternator Output	12V - 41A / @6,000 r/min			

Variety of Optional Equipment



TOCS 4.3 inch LCD Display

The TOCS (Tohatsu Onboard Communication System) 4.3 inch LCD Display connects to the CAN bus and communicates directly with the engine's ECU. Engine data, fault codes and alarms are displayed on the LCD display. Fits a standard 3 3/8" (85mm) instrument dash hole which makes this display the perfect drop-in replacement for your current tachometer. Features that this display can indicate;

- Engine RPM
- Engine Operating Temperature
- Engine Battery Voltage
- Fuel Consumption
- Tilt/Trim Gauge (optional harness needed)
- Total Engine Operating Hours
- Multiple Fuel Tank Levels
- Course/Speed Over Ground (optional GPS unit needed)
- Various warnings
- Self Diagnostic System



Multi-Function Tiller Handle

The multi-function tiller handle features an ergonomically designed shift lever for easy and convenient shifting as well as a longer throttle grip with grip-end trim switch for easier maneuverability.

All controls on the multi-function tiller are conveniently located on the handle for easy access and control. More specifically, the gear shift, throttle control, trim switch, safety lanyard cord, warning lights, and electric start key switch are all integrated in the tiller handle.

To balance different wind and current conditions, the Variable Idling System allows the user to select the best idling speed from 5 different RPM ranges by simply pressing the Key Switch.



Check out our brand at
www.tohatsu.com and social medias

